






## Instructions for reading Aidon 7534 smart energy service device

The energy service device is read and its functions can be controlled via remote connection. Electricity can be connected or disconnected via remote connection. Connection and disconnection can also be carried out with the push button on the switching device.

If you wish to switch off electricity in your home, please do it primarily with the push button on the switching device. That way the data communications will not be interrupted and the meter can still be read remotely.

**During electrical works the power must be switched off at the mains of the dwelling, and the fuses for the work area must be unplugged.**

### Indicator lights and buttons

Indicator light of the switching device	Status	Actions
 Blue light is on	Electricity is connected.	
 Blue light is flashing	Electricity is disconnected.	Press the push button of the switching device.
 Red light is flashing	Electricity is disconnected and reconnection is disabled.	Contact the customer service of your energy provider. The energy service device is in this state if there is no electricity contract for the metering point.
The indicator light is off and the display of the service device is blank	The energy service device has no power.	Check that the main switch is on (position I) and the fuses are intact.



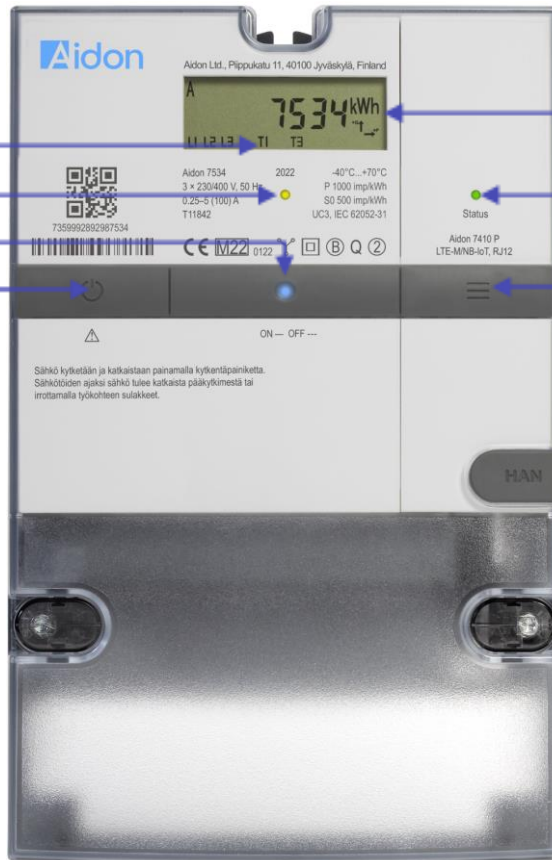
\*screen caption translations  
below

Aktiivisen tariffin osoitus

Sähkön kulutuksen merkkivalo

Kytkentäilaitteen merkkivalo

Kytkentäilaitteen painike



Mittaustiedon näyttö

Tiedonsiirtoyhteyden merkkivalo

Näytön selauspainike

Indicator for active tariff  
Indicator light for electricity consumption  
Indicator light for switching device  
Push button for switching device

Metering data display  
Indicator light for data transmission  
Scroll button for display

A warning triangle shown on top of the meter display indicates an error situation. In this case, please contact the customer service of your energy provider.

## Display

The following data can be read on the display of the energy service device.

### Display

1. Total energy A+, consumption
2. Total energy A-, production (with scroll button)
3. Total reactive energy R+, consumption (with scroll button)
4. Total reactive energy R-, production (with scroll button)
5. Daytime energy T1 (with scroll button)
6. Night-time energy T2 (with scroll button)
7. Energy at other times T3 (with scroll button)
8. Winter weekday energy T4 (with scroll button)
9. Date (with scroll button)
10. Time (with scroll button)
11. Instantaneous power in energy use (with scroll button)



**Kymenlaakson  
Sähköverkko**

If your distribution product is time-of-day distribution or seasonal distribution, storage appliances such as hot water storage tanks are switched on with a variable delay of 1–60 minutes after 10pm. Despite the delay in switching on, energy metering for the lower-cost period starts at the agreed time.