



Instructions for reading the Kamstrup 162M and 382M remotely read electricity meter



The electricity meter can be read, and its functions can be controlled via a remote connection.

How to disconnect the power supply to your home

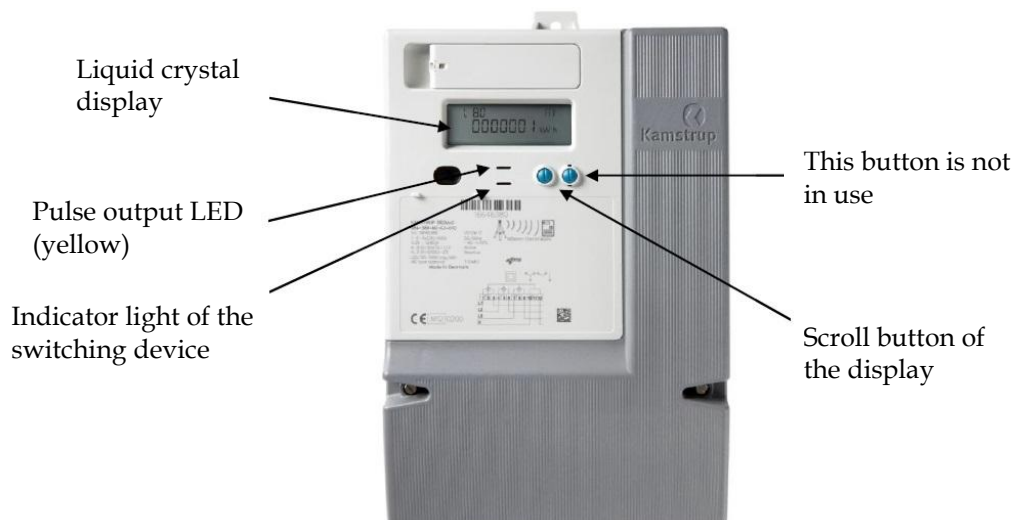
- To disconnect the power supply to your home, you should mainly use the switch system on the meter. This way, the data collection part of the meter will not be disconnected and the readings can be taken by us remotely.
- **For the duration of electrical work, electricity must be disconnected from the main switch of the property by removing the fuses for the work area.**
- Electricity can also be connected or disconnected via the remote connection
- **Instructions for using the switching device (as displayed on the meter in Finnish)**

| Connecting/disconnecting electricity for a property For the duration of electrical work, electricity must be disconnected from the main switch of the property and the fuses for the work area should be removed. | |
|--|---|
| Disconnection | Connection |
| Select the text 'dCon' on the display using the scroll button. | Connection can only take place when the green indicator light is on. |
| When the text 'dCon' is displayed, press the scroll button for about 6 seconds. | With the scroll button, select another option other than 'dCon' on the display and press the button for about 6 seconds. |
| The electricity supply is disconnected and the red indicator light is on for about 5 seconds, after which it will start flashing. | The electricity supply is connected and the red indicator light goes off. |

The function of the indicator lights on the switching device

| The indicator light of the switching device | Mode |
|--|---|
| The red light is flashing  | The electricity is disconnected, but connection is possible. |
| The red light is illuminated  | The electricity is disconnected and connection is prohibited. |

The yellow pulse output LED diode in the middle of the front cover flashes 1,000 times when you use one kWh (the pulse output is 1,000 imp/kWh).





Reading your own electrical consumption with the metering device

- With single-rate metering (normal domestic electricity), the total energy reading is shown on the display. You can also obtain the current energy being used, time, date and use of the switching device with the scroll button of the meter display.
- With dual-rate metering (night and seasonal electricity), the data presented in the following table, alternates on the display. You can use the scroll button to accelerate the speed of display and to see the additional data presented in the table.

| General electricity | General electricity, using the scroll button |
|---------------------|--|
| 1. Total energy | 1. Total energy 2. Date (year, mm, dd) 3. Time of day 4. Actual power used 5. Use of switching device (dCon) |

| Night and seasonal electricity | Night and seasonal electricity, using the scroll button |
|--|--|
| 1. Night energy / other time (T1/T3) 2. Day energy / winter weekday (T2/T4) 3. Date (year, mm, dd) 4. Time of day | 1. Total energy 2. Night energy / other time (T1/T3) 3. Day energy / winter weekday (T2/T4) 4. Date (year, mm, dd) 5. Time of day 6. Current energy being used 7. Use of switching device (dCon) |

If you buy night-time electricity from us (or seasonal electricity) electrical appliances, such as water heaters, are switched on with a variable delay of between 1–60 minutes after 10 pm. Despite the connection delay, energy metering for the cheaper rate is switched on at the contracted time (i.e. 10pm).

Kymenlaakson Sähkö customer service, tel. 05 7780 500, open Mon–Fri 8am–5pm.